

FEATURES AND BENEFITS

- Perfect fixture for lighting narrow aisle racks and floors in high bay facilities with 30'+ ceiling heights
- Superior optics direct the light where it is needed with incredible precision
- Very high spacing criteria (SC up to 2.0) along the aisle reduces fixture count
- Extremely low spacing criteria (SC < 0.3) perpendicular to the aisle directs all of the light onto the floor and racks
- Consumes less than 1/2 of the energy while delivering the same footcandles as comparable LED, HID and fluorescent luminaires
- Aluminum heat diffusers in an open frame housing design yields optimal thermal management and venting
- Made in USA

MECHANICAL

Housing: The LED light engines mount to an integral 18-gauge ventilated aluminum frame for optimal thermal management. The compact dimensions and light weight housing make installation in high bays using elevated lifts simpler, faster and safer than competing fixtures.

Optics: Proprietary BI-AX OPTIC™ system provides precise beam control and long term stability not possible with reflectors. The precision engineered beam pattern provides even floor and rack illumination with an extremely wide throw along the aisle.

ELECTRICAL

LED Light Engine: High efficacy, long life LED arrays.

IES-TM Lumen Maintenance L95¹ > 54,000 hours.

Lumen Maintenance L70² > 200,000 hours.

Driver: High efficiency electronic driver.

Control Options:

- Integrated occupancy sensor
- 0-10V dimming
- All wired or wireless control systems

INSTALLATION

Suitable for suspension by chain, cable or optional aircraft cable gripper assembly.

WARRANTY

10 year limited warranty on luminaire. See www.lumenoptix.com for details.

LABELS & LISTINGS³



¹ IES TM-21 calculator results are validated by the US National Institute of Standards and Technology (NIST).

² Extended TM-21 projections are not recognized by Energy Star or Design Lights Consortium.

³ DLC listing applies to 13000 lumens option.

STRATOS®



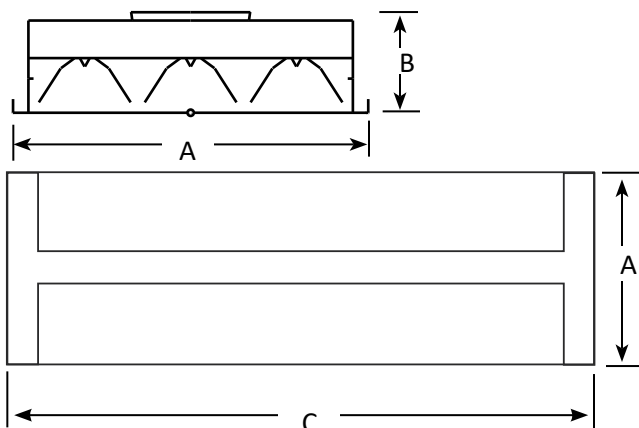
Industrial High Bay Rack Lighter

Designed For Ceiling Heights Greater Than 30'

TECHNICAL DATA

LIGHT OUTPUT (lm)	INPUT POWER (W)
9000	80
13000	120

DIMENSIONS & FIXTURE CONFIGURATIONS



LIGHT OUTPUT (lm)	WIDTH (A)	HEIGHT (B)	LENGTH (C)
9000	12.2"	2.75"	25.75"
13000	16.5"	2.75"	25.75"

MODEL NUMBER / ORDERING KEY

See separate spec sheets for detailed information on available options and accessories

STR	2		TA7								
SERIES	FIXTURE LENGTH	NOMINAL LUMENS	LED TYPE/ CRI	COLOR TEMPERATURE	BEAM DISTRIBUTION	INPUT/DIMMING	MOUNTING	CORDSET	SENSOR READY WIRING	EMERGENCY LIGHTING	OTHER
STR STRATOS High Bay Rack Lighter	2 2ft	9 9000 lumens 13 13000 lumens	TA7 High efficiency 70 CRI	40K 4000 Kelvin 50K 5000 Kelvin	A1 ¹ Focus - Medium (0.3 X 1.5 SC) A2 ² Focus - Wide (0.3 X 2.0 SC)	DUX Non dimming (120V-277V) DHX Non dimming (347V-480V) DU1 0-10V dimming (120-277V) DH1 01-10V dimming (347-480V)	KXX No Mounting Hardware KT1 10' Toggle and Cable Set with 18" Y's KT2 20' Toggle and Cable Set with 18" Y's	CXX No cord C01 6' 18/3 300V cord C02 6' 18/3 600V cord C03 15' 18/3 300V cord C04 15' 18/3 600V cord C05 6' 18/3 cord with Nema 5-15 plug C06 6' 18/3 cord with Nema L7-15 plug C07 15' 18/3 cord with Nema L7-15 plug C13 15' 18/3 cord with Nema 5-15 plug C16 6' 18/3 cord with Nema L8-20 plug C17 6' 18/4 cord	(Blank or NXX) No sensor NAS Aisle motion sensor std. temperature NAL Aisle motion sensor low temperature	(Blank or EBXX) No emergency battery back-up installed EB01 ³ Emergency battery back- up (700 lumens) EB02 Emergency battery back- up (1200 lumens)	(Blank or SXX) No option included

¹ Only available with 9000 lumen opt on.

² Only available with 13000 lumen option.

For other dimming options, consult factory.

³Not available with 347V/480V.

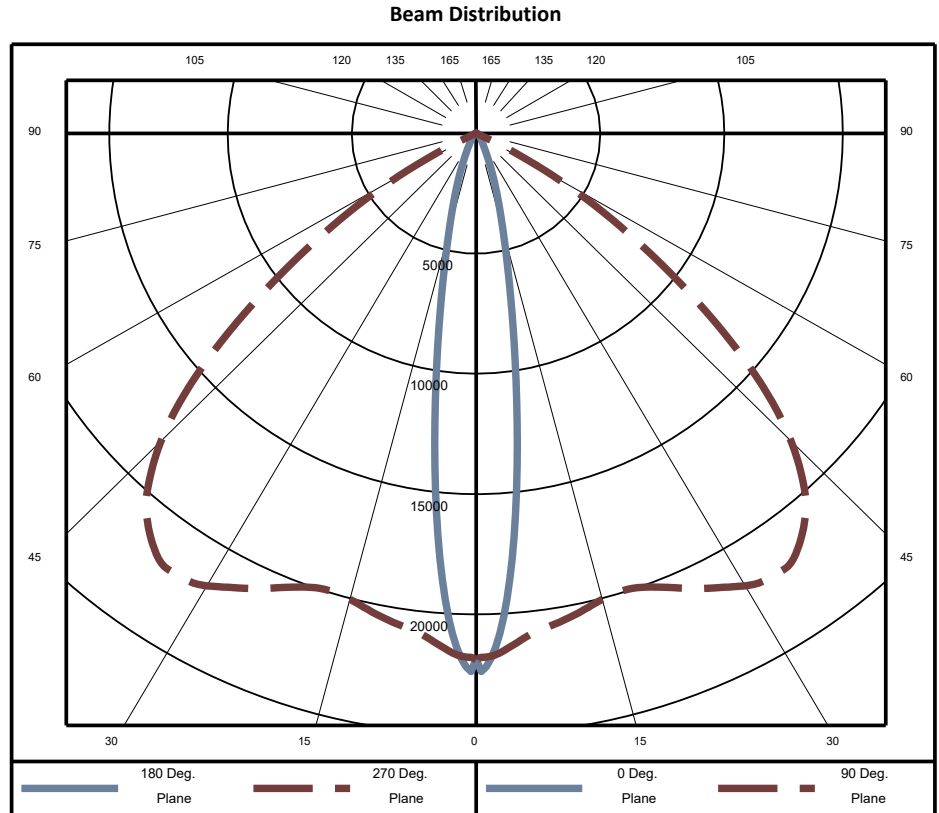
TESTING SUMMARY

Testing was performed in accordance with LM-79-08.

NOTE: A2 Beam Distribution (13000 lumens)

Zonal Lumen Summary		
Zone	Lumens	% Luminaire
0-30	6944	50.8%
0-40	9686	70.9%
0-60	13372	97.8%
0-90	13667	100.0%
40-90	3981	29.1%
60-90	295	2.2%
90-180	0	0.0%
0-180	13667	100.0%

Spacing Criteria	
0-180	<0.3
90-270	2.0



ILLUMINANCE
Mounting Height vs. Spacing
Floor / Rack (fc)

Spacing	Mounting Height (ft)			
	30	35	40	45
30	33/10	30/9	25/7	24/7
35	29/8	26/7	22/7	21/6
40	25/7	23/7	20/6	19/5
45	22/7	20/6	17/5	17/5
50	20/6	18/5	16/5	N/R
55	19/5	17/5	N/R	N/R
60	17/5	15/4	N/R	N/R

30" work plane avg. fc / 2ft to 6ft rack avg. fc
10ft aisle, ceiling 2ft above mount
.4/.4/.6 floor/rack/ceiling reflectivity

ILLUMINANCE PLOT

